

# Data Analytics Update

## Health IT Standards Committee Meeting

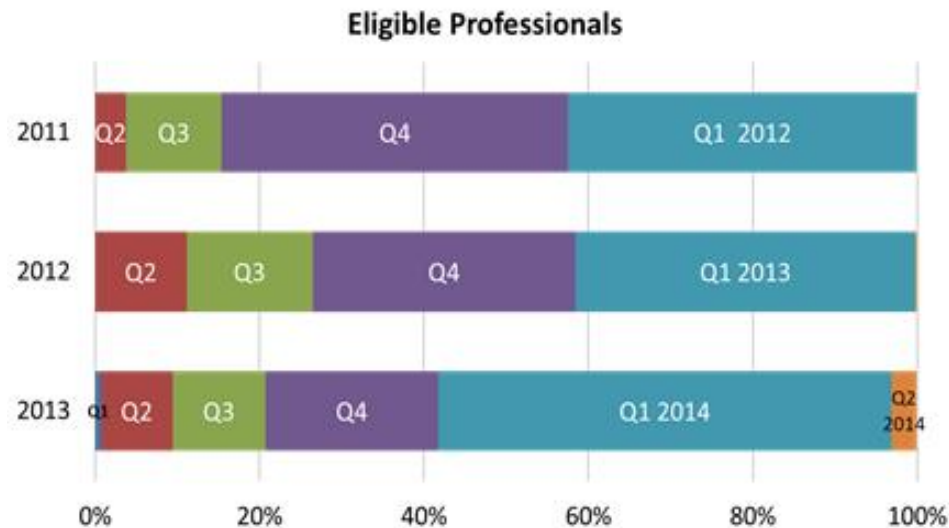
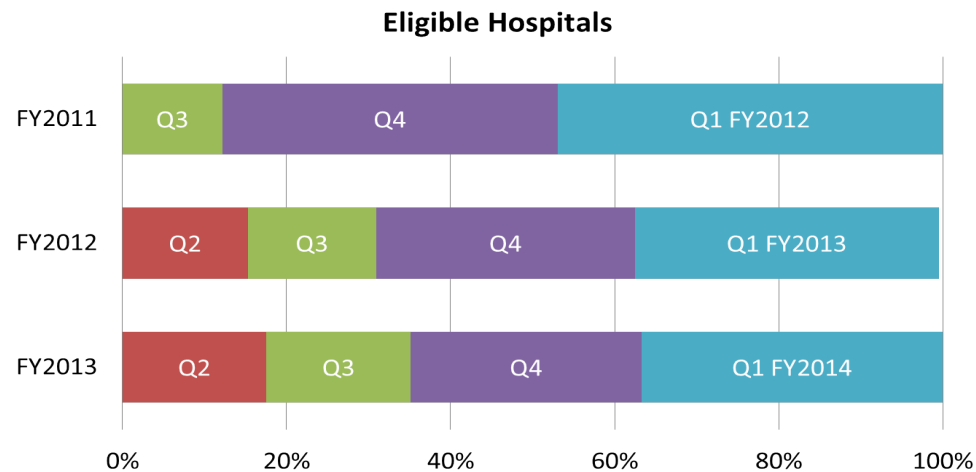
January 27, 2015

- Describe eligible hospital attestation patterns
- Define stage 2 eligible providers
- Describe preliminary stage 2 attestation patterns

# Attestation trends

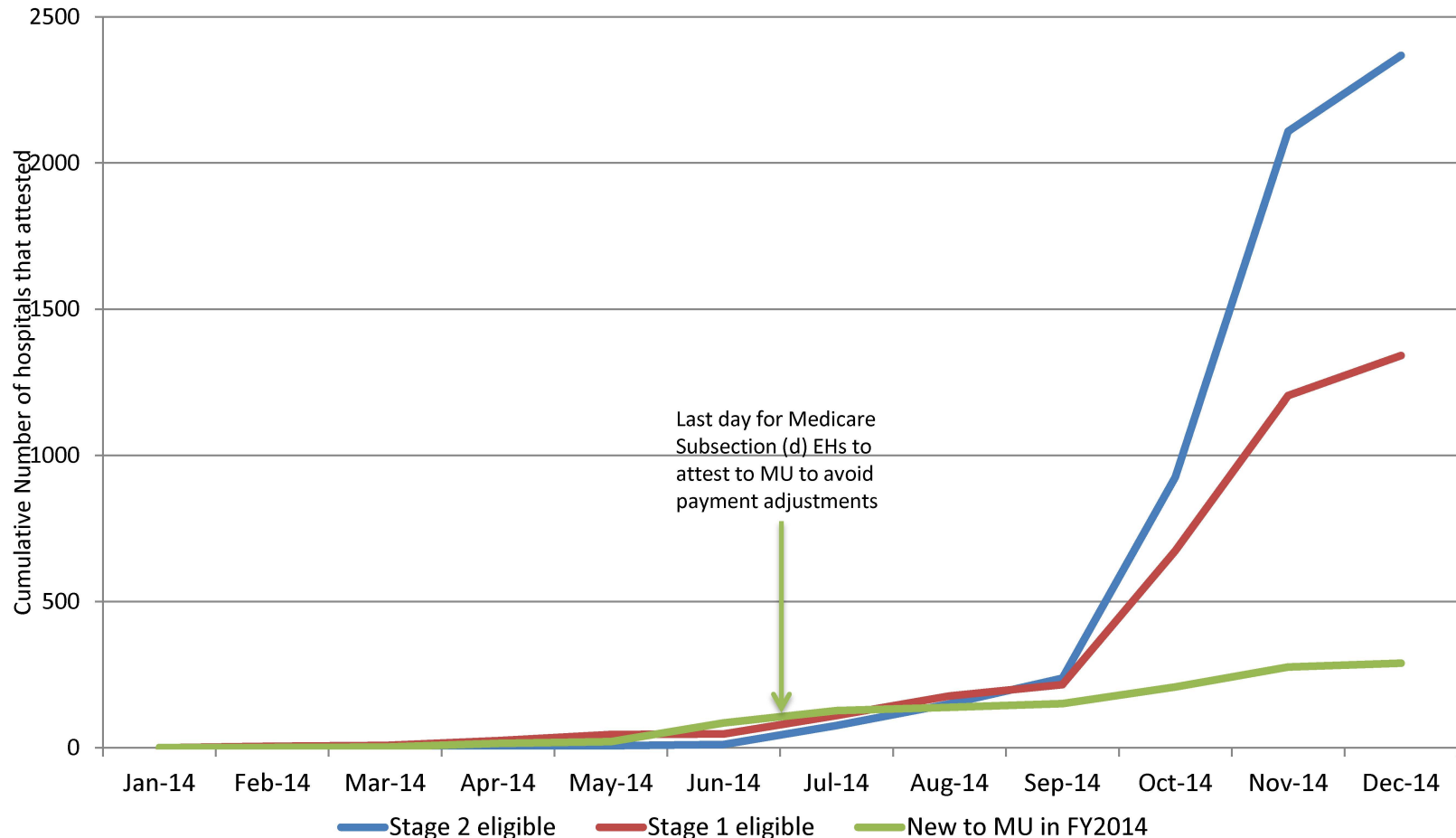
# Historically, many eligible providers did not attest until after the close of the fiscal (hospitals) or calendar (professionals) year

First-time meaningful use attestations by the quarter the attestation was submitted



# Eligible hospital FY2014 attestations followed historical trends

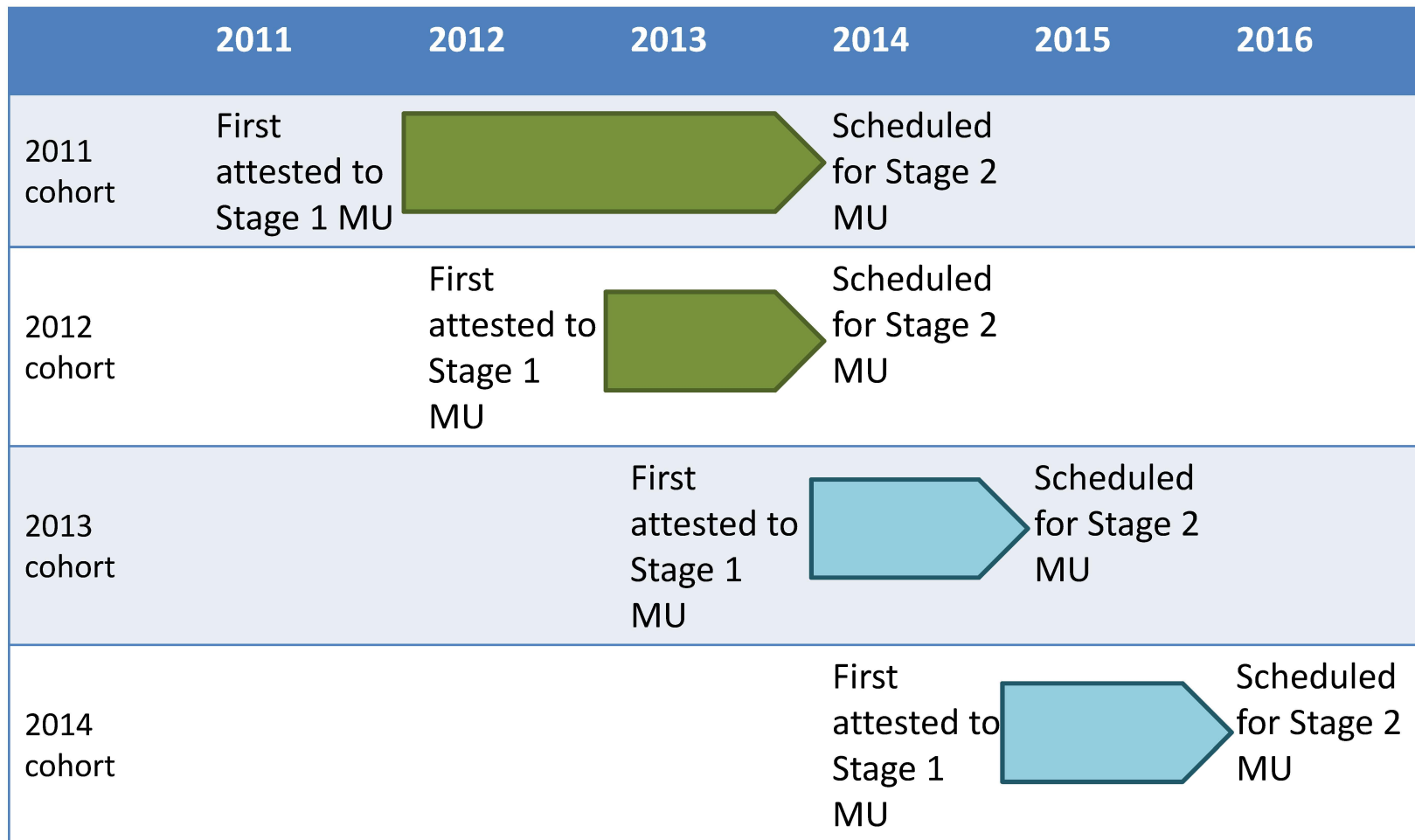
**FY2014 eligible hospital attestations**



- Historically, EHs and EPs attest after their reporting year closes
- 85% (~3,400) of hospital attestations for 2014 occurred after the fiscal year closed
- Eligible professionals have until February 2015 to attest

# Stage 2 attestations

# Providers must complete 2 years of stage 1 before progressing to stage 2

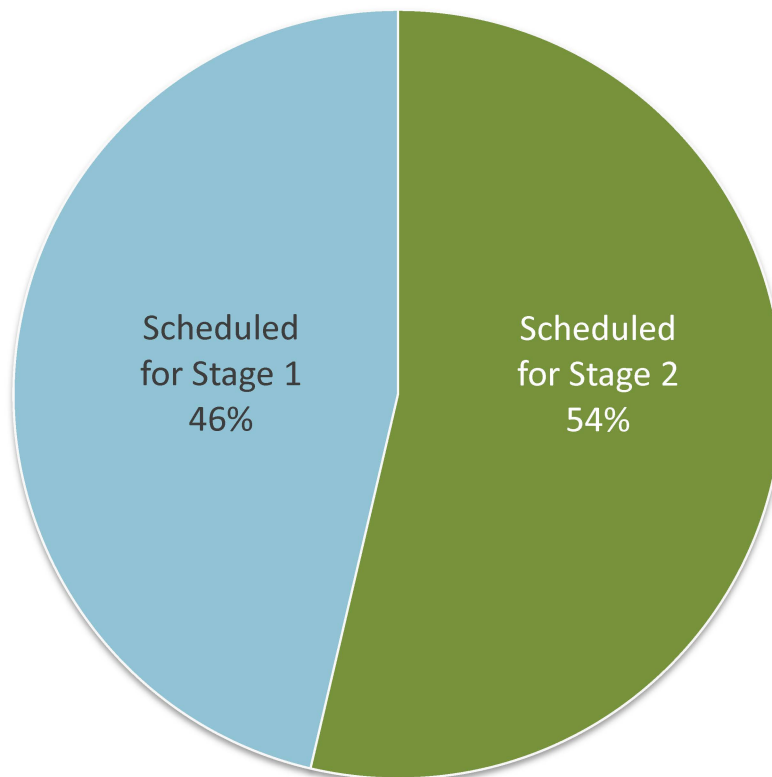




# Not all eligible providers are able to attest to stage 2 in 2014

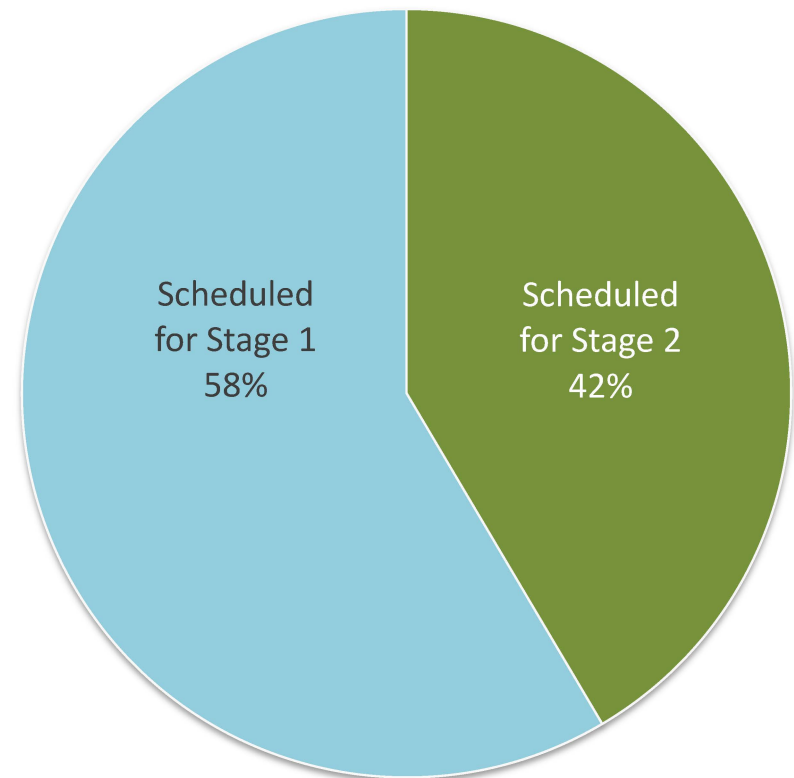
## Proportion of eligible providers by meaningful use eligibility stage

**Eligible Hospitals and CAHs**



N=4,993

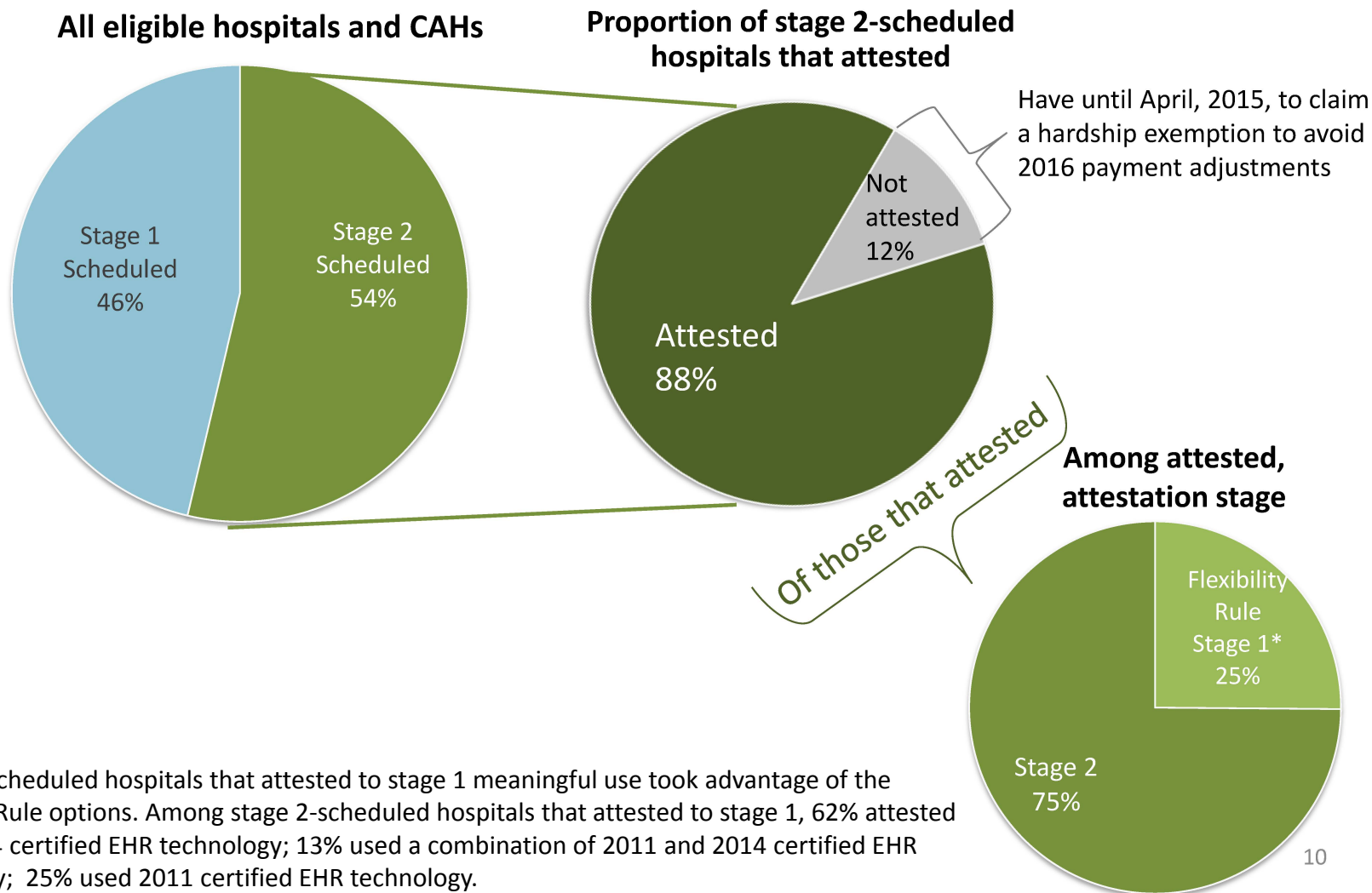
**Eligible Professionals**



N=537,600

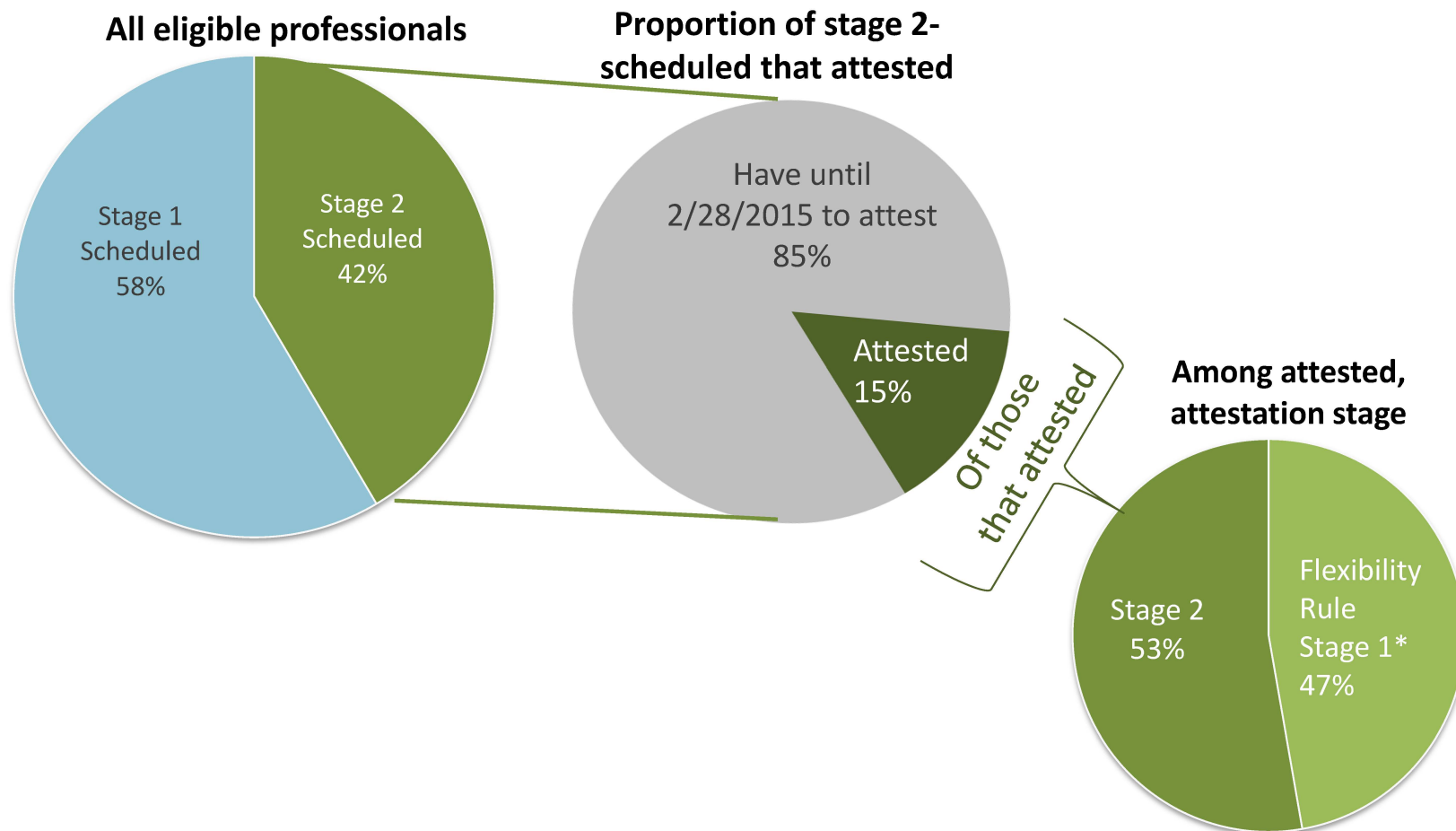
Only eligible providers who have completed two years of stage 1 meaningful use (i.e. those that first attested in 2011 or 2012), are eligible to attest to stage 2 in 2014.

# Almost 9 in 10 stage 2-scheduled hospitals attested



- There are 4,993 eligible hospitals
- 54% (~2,700) of eligible hospitals were scheduled for stage 2 in 2014
- Of the stage 2-scheduled hospitals, 88% (~2,400) attested
  - Of those that attested, 75% (~1,800) attested to stage 2
  - The remaining 25% (~600) used the flexibility rule to attest to stage 1
- The remaining 12% that did not attest will be a combination of hospitals that request a hardship exemption or skip 2014
  - Hospitals may apply for a hardship exemption until April 1, 2015

# Preliminary stage 2-scheduled EP attestation data



\*Stage 2-scheduled EPs that attested to stage 1 meaningful use took advantage of the Flexibility Rule options. Among stage scheduled EPs that attested to stage 1, 28% attested using 2014 certified EHR technology; 6% used a combination of 2011 and 2014 certified EHR technology; 65% used 2011 certified EHR technology.

- There are 537,600 eligible professionals
  - Attestation period is open through February, 2015
  - These data include attestations through December, 2014, and most attestations may occur in Jan-Feb, 2015
- 42% (~223K) of eligible professionals were scheduled for stage 2 in 2014
- Thus far, 15% (~33K) of the stage 2-scheduled EPs have attested
  - Of those that attested, 53% (~17K) attested to stage 2
  - The remaining 47% (~16K) used the flexibility rule to attest to stage 1
  - Providers who do not attest by February may apply for a hardship; the deadline is July 1, 2015

# Questions