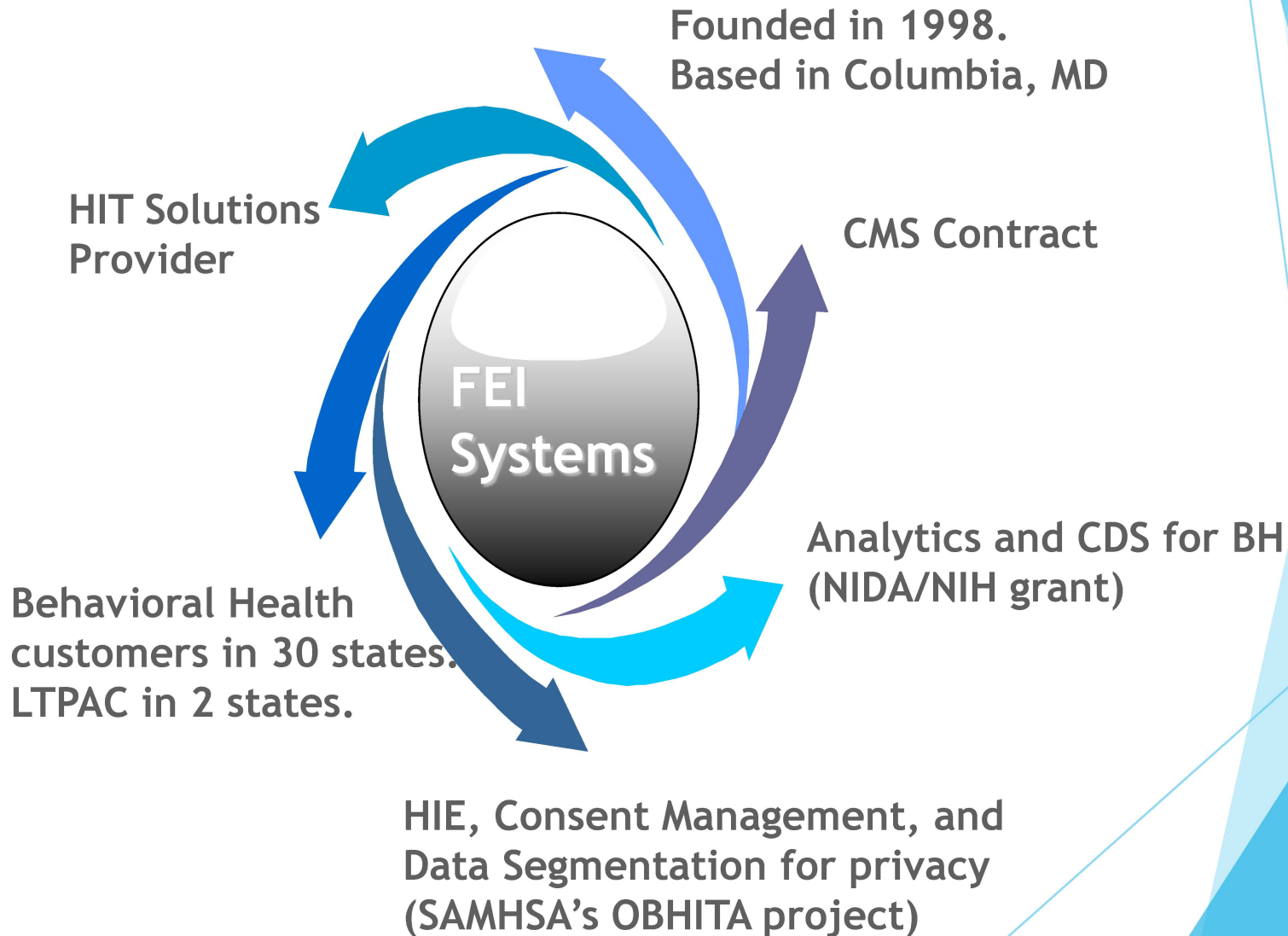


FEi Systems Statement

Prepared for: ONC Voluntary EHR Certification Listening
Session for LTPAC and BH

Prepared by: Joel Amoussou, Technical Manager, Standards
and Interoperability

About FEi Systems



BH and LTPAC Integration Challenges

1

BH Providers not eligible for MU:

Psychologist, clinical social workers, community mental health centers, substance abuse treatment programs, etc.

2

Additional barriers to integration:

Privacy regulations (e.g., 42 CFR Part 2)

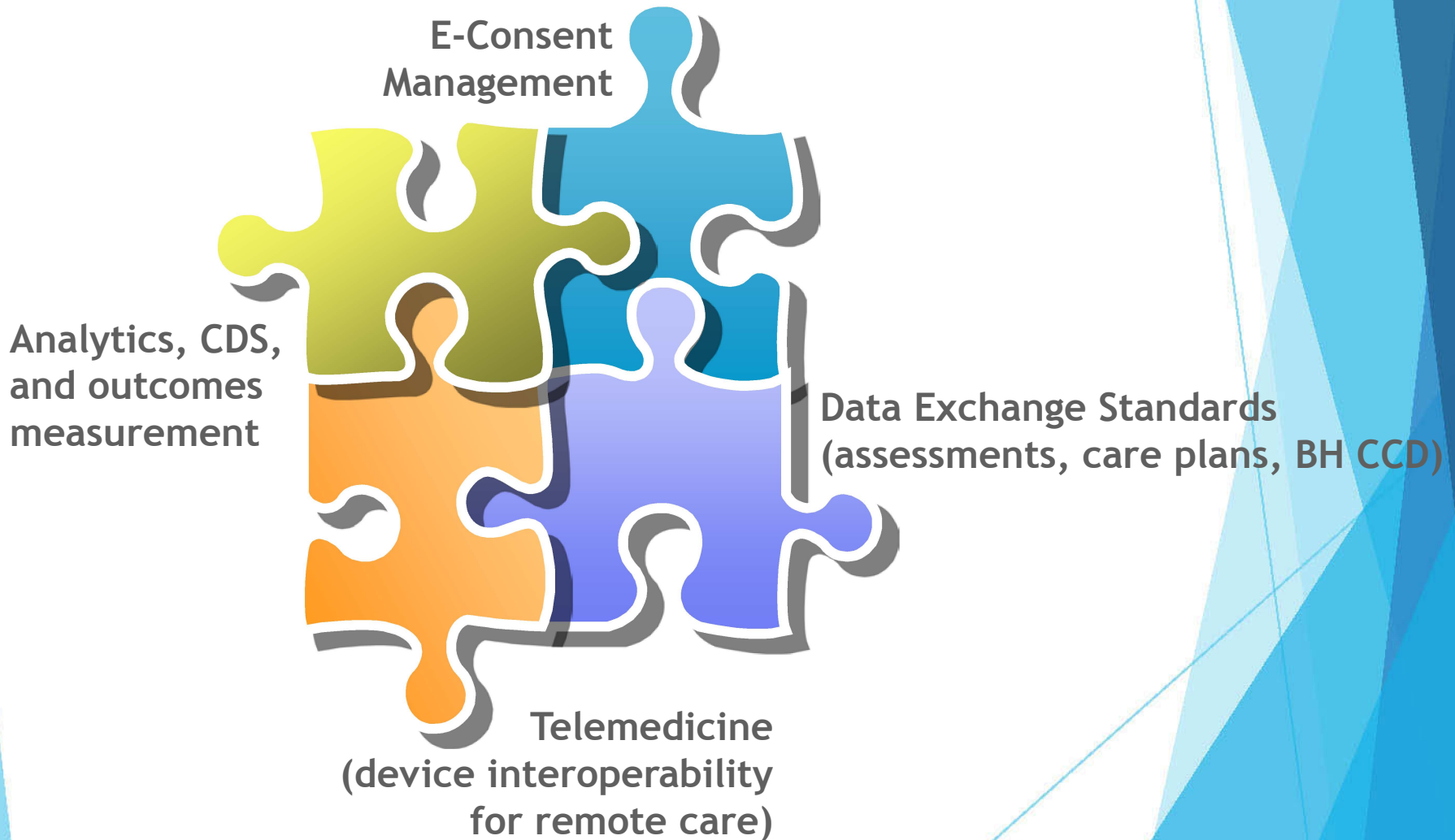
Consent and data segmentation for privacy

3

Interoperability:

Light-weight standards needed for medical device connectivity, data, transport, and security

FEI's Vision for Integrated BH and LTPAC



Thanks!

Joel.Amoussou@feisystems.com