

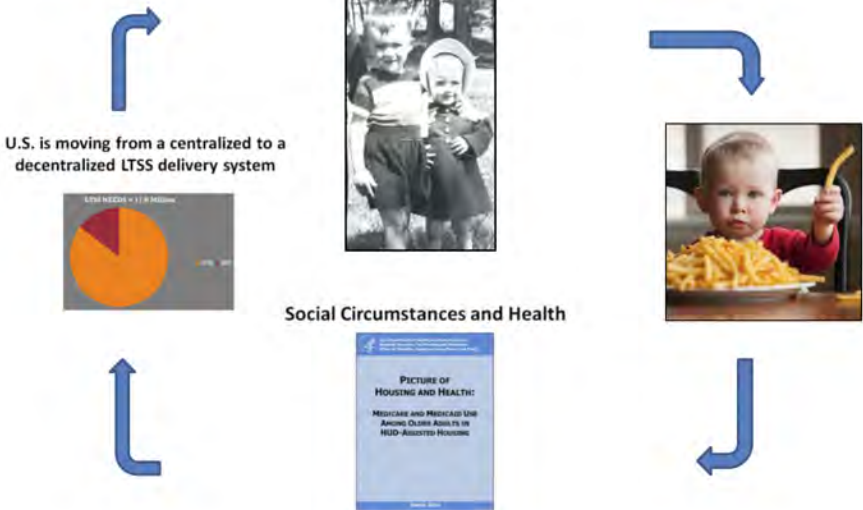


SASH *a caring partnership*
SUPPORT AND SERVICES at HOME

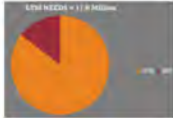
A caring partnership to help seniors and individuals with special needs stay at home and healthy

Health IT Policy Committee
Nancy Rockett Eldridge, CEO
Cathedral Square Corporation
June 2, 2015


Why SASH?



U.S. is moving from a centralized to a decentralized LTSS delivery system

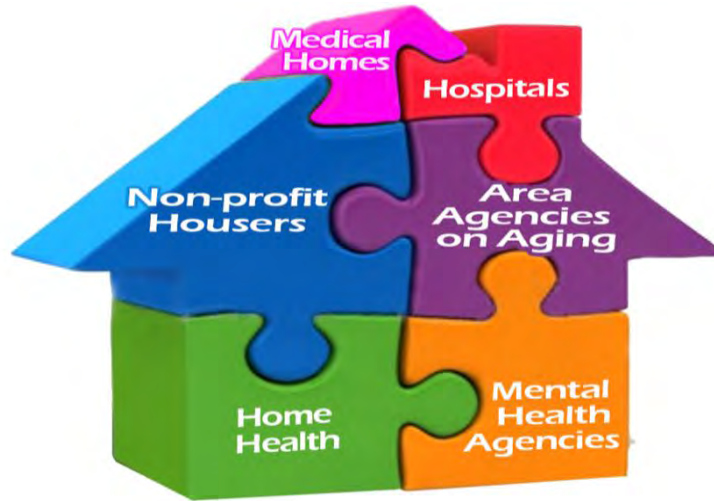


Picture of Housing and Health!
MEDICARE AND MEDICAID FOR AGING OLDER ADULTS IN HUD-ASSISTED HOUSING



SASH *a caring partnership*
SUPPORT AND SERVICES at HOME

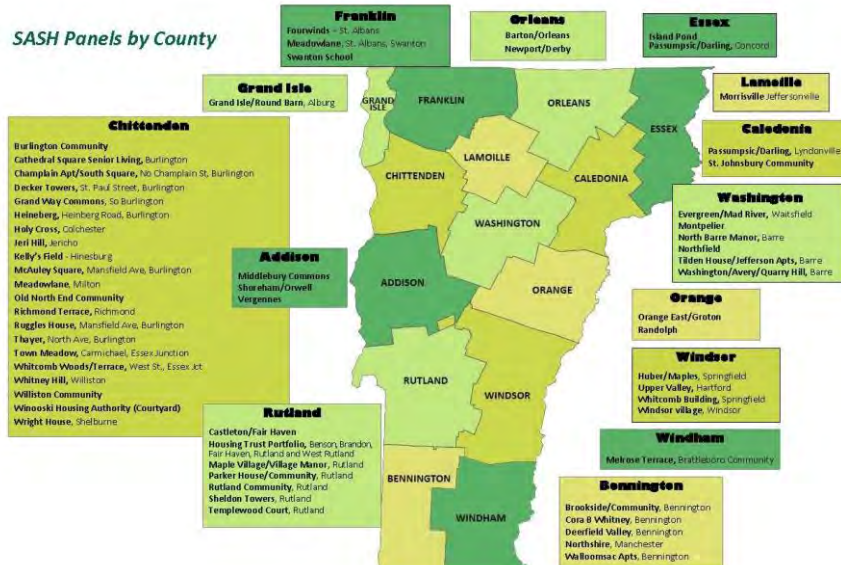
Bridging Health and Social Services



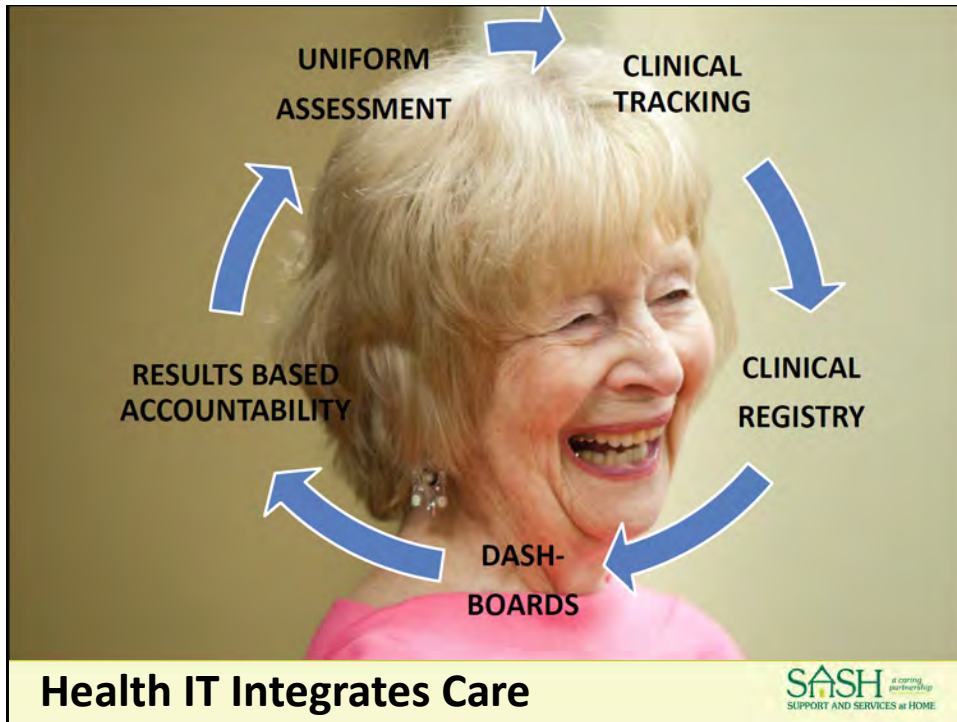
SASH a caring partnership
SUPPORT AND SERVICES at HOME

Accountable Health Communities of the Future

SASH Panels by County



SASH a caring partnership
SUPPORT AND SERVICES at HOME

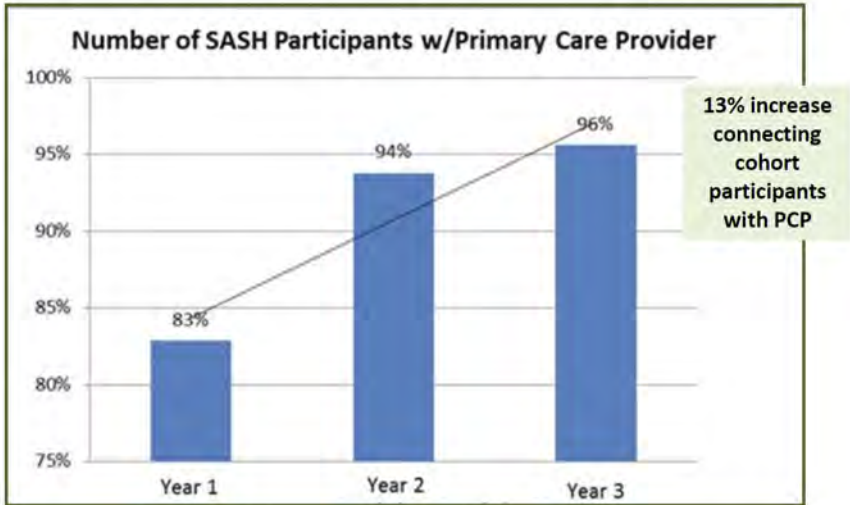


SASH Program is Delivering Results

- Reduced Hospitalizations
- Improved Nutrition
- Increased Activity
- Reduced Medicare Expenditures



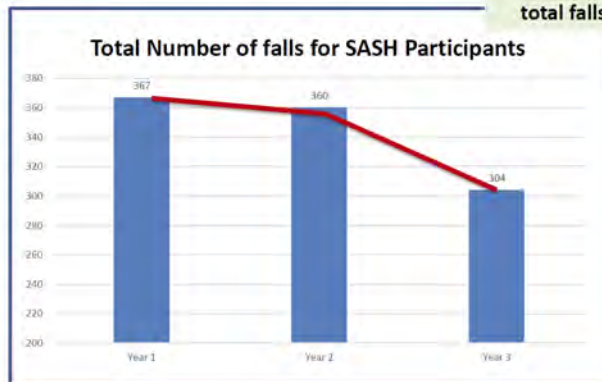
Population Health Outcomes



SASH a caring partnership
SUPPORT AND SERVICES at HOME

Population Health Outcomes, continued

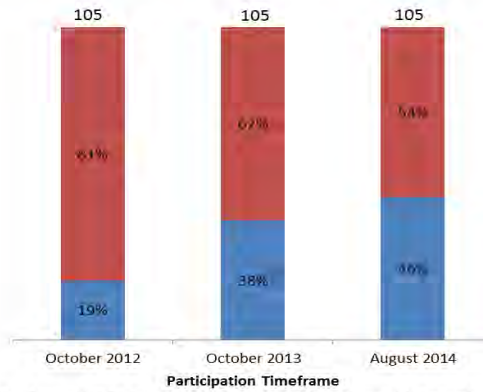
53%
failed falls risk
assessment



SASH a caring partnership
SUPPORT AND SERVICES at HOME

Population Health Outcomes

Percent of SASH Participants with HTN Diagnosis and Controlled BP *



27% Increase in cohort of participants with diagnosed Hypertension whose blood pressure came under control in 2 year period

- Participants with HTN diagnosis and uncontrolled BP
- Participants with HTN diagnosis and controlled BP

*National Quality Forum NQF Measure 18: Percentage of patients 18 through 85 years of age who had a diagnosis of hypertension and whose blood pressure was adequately controlled (<140/90 mmHg) during the measurement period



An Opportunity or a Barrier?





- ▶ **Telemedicine at Home**
- ▶ **Medicaid**
- ▶ **Replication**
- ▶ **Results Based Accountability**

SASH a caring partnership
SUPPORT AND SERVICES at HOME

THANK YOU!

Contact Information:

Nancy Rockett Eldridge
Chief Executive Officer
Eldridge@cathedralsquare.org
802.863.2224

Cathedral Square Corporation
412 Farrell Street, Suite 100
South Burlington, VT 05403
www.SASHVT.org

HEALTHY HOMES

CARING COMMUNITIES

POSITIVE AGING

SASH a caring partnership
SUPPORT AND SERVICES at HOME