

A woman with dark hair, wearing an orange sweater, is shown in profile, looking upwards and to the right. She is interacting with a complex, futuristic digital interface. The interface features a glowing blue globe on the left, surrounded by various data visualizations including bar charts, line graphs, and circular gauges. The background is a dark blue with a grid of light blue lines and a network of glowing nodes. The overall aesthetic is high-tech and data-driven.

Health Equity by Design: Framing of the Problem and Recommendations

Medell Briggs-Malonson, MD, MPH, MSHS

Chief, Health Equity, Diversity, and Inclusion, UCLA Health

Associate Professor of Emergency Medicine, David Geffen School of Medicine at UCLA

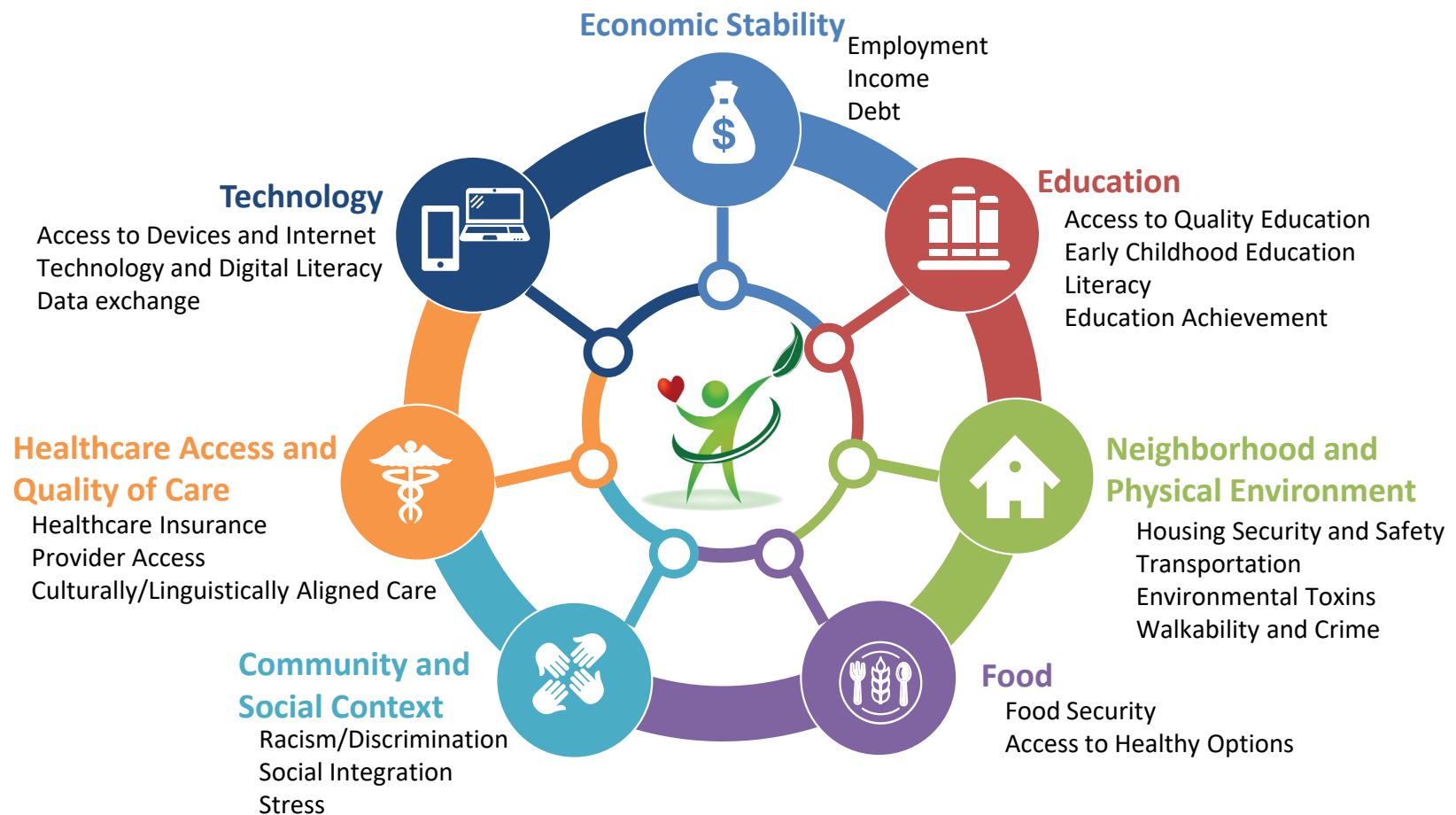
What is **Health Equity**?

Health Equity

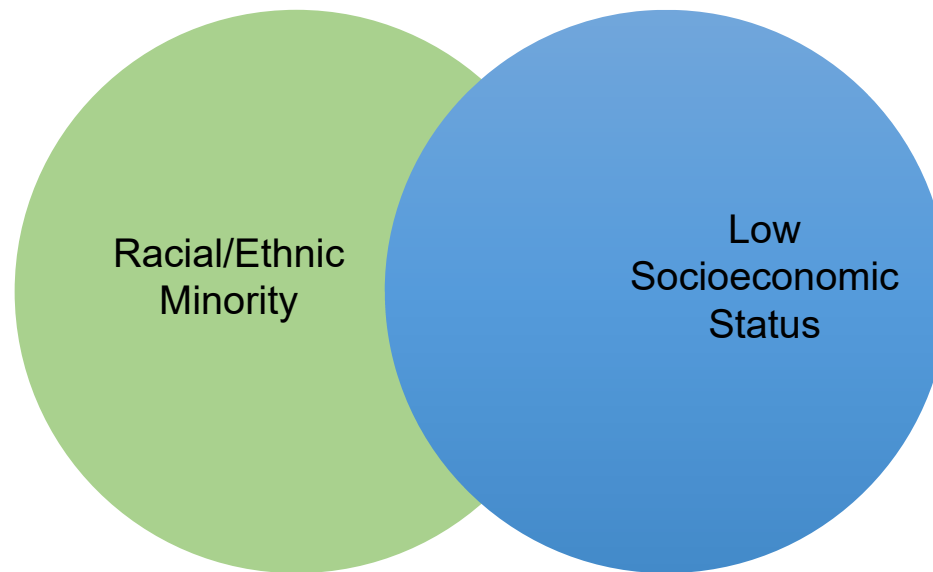


Health equity means that everyone has a fair and just opportunity to attain their highest level of health.

7 Social-Structural Drivers of Health

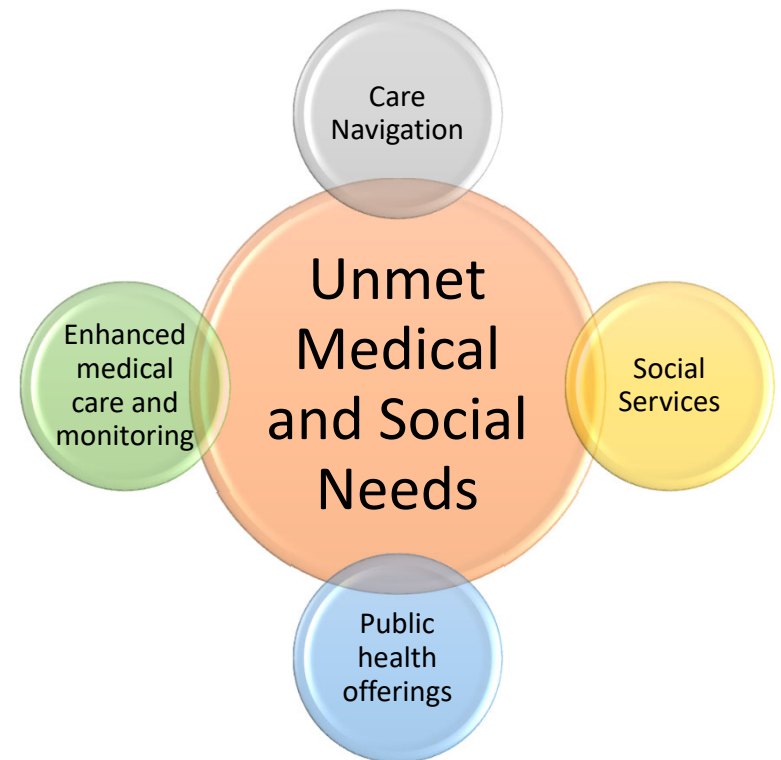
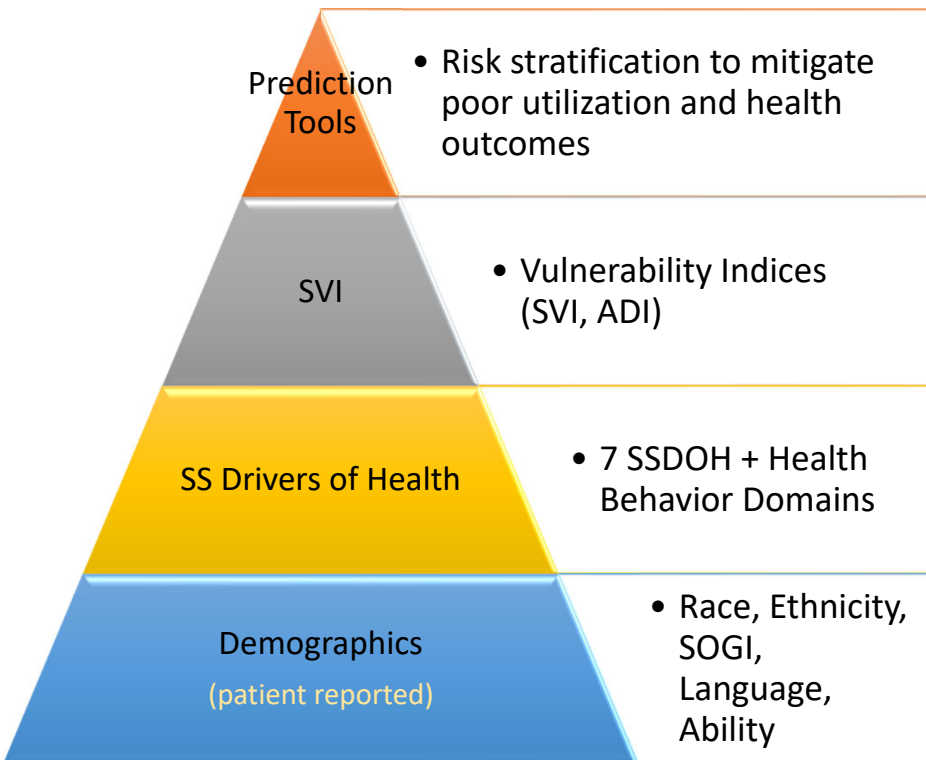


Critical Error: Racialization of Socioeconomic Status

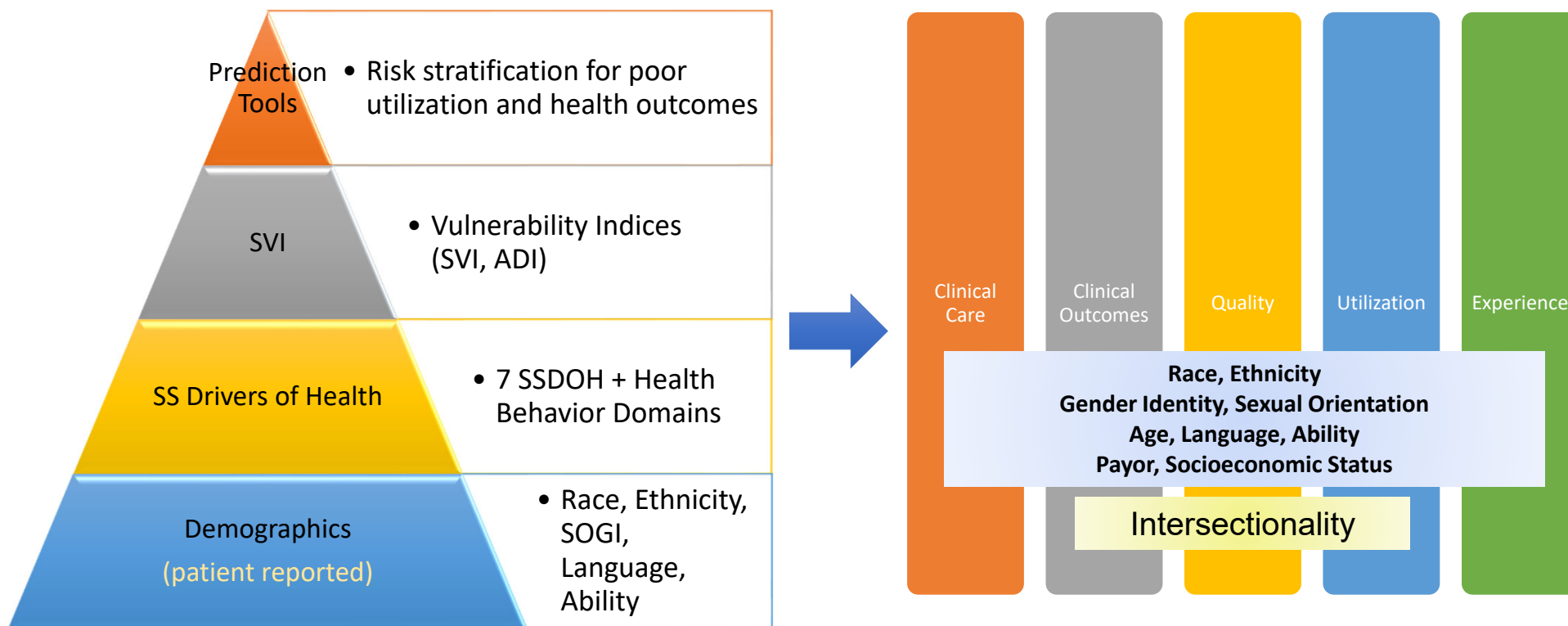


Race is a social construct with no biologic basis
Systemic racism, **NOT RACE**, is the root of racial/ethnic health and wealth inequities

Assess for Patient-Level Inequities



Assess for Population-Level Inequities



High Priority System Needs: Standard Analytics and Business Intelligence Frameworks

Key Insights: Healthcare Variation, Health Outcome Gaps, Utilization Trends, Technology Access, Ease of Use

Engage in Equity-Focused Innovation

UCLA Health

ASSESS METRICS FOR SUCCESS

Assess key performance metrics to identify differences in outcomes that require targeted interventions

DESIGN TO ADVANCE HEALTH EQUITY

Implement novel systems that incorporate, impact, and measure SDOH on an individual/population level



RECOGNIZE AND ELIMINATE BIAS

Recognize and eliminate bias in systems and algorithms that perpetuate racism and discrimination

STRIVE FOR INCLUSIVE EXCELLENCE

Build systems rooted in inclusive excellence that center the needs of those that are served

Recommendations

Standard Frameworks

- Develop and support standardized data analytic and business intelligence infrastructures to identify and mitigate inequities in health and technology
- Advance innovative systems that that incorporate and impact drivers of health, especially data exchange, technology accessibility, and digital literacy

Inclusive Design

- Center the voice and needs of diverse populations with a focus on:
 - Language and ability inclusivity
 - Cross-cultural design
 - Human-centered impact
 - Population health management

Accountability

- Elevate equity to the level of quality and patient safety
- Create accountability policies and structures to enforce equitable provision of healthcare services and health outcomes

Thank you!

mbmalonson@mednet.ucla.edu
@MedellBriggsMD