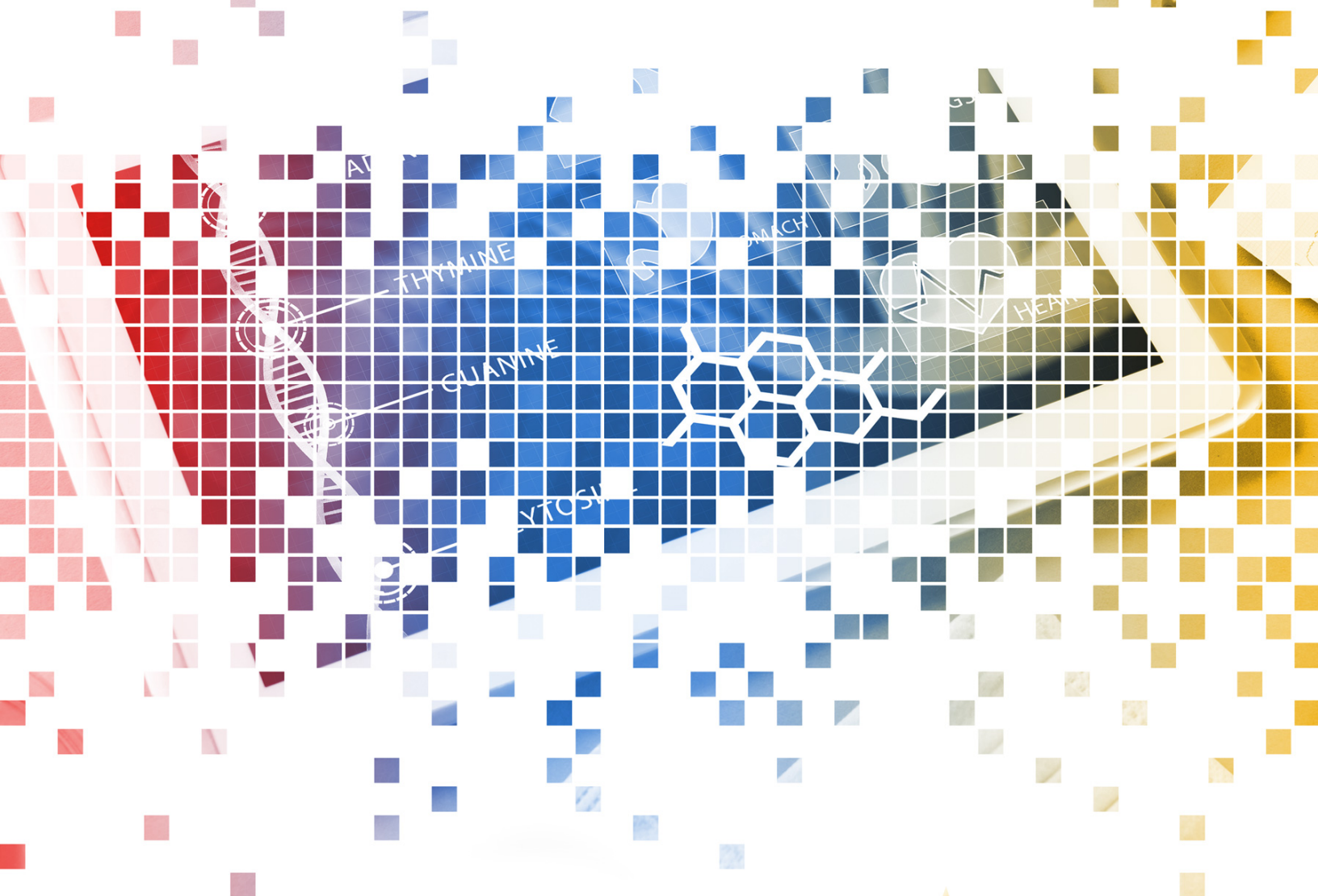




U.S. Core Data for Interoperability

2019 • VERSION 1



The Office of the National Coordinator for
Health Information Technology



The USCDI is a standardized set of health data classes and constituent data elements for nationwide, interoperable health information exchange.

A USCDI “Data Class” is an aggregation of various Data Elements by a common theme or use case.

A USCDI “Data Element” is the most granular level at which a piece of data is represented in the USCDI for exchange.

Assessment and Plan of Treatment	4
Care Team Member(s)	4
Clinical Notes	5
Goals.....	6
Health Concerns	6
Immunizations	7
Laboratory.....	7
Medication	8
Patient Demographics	8
Problems	10
Procedures	10
Provenance	11
Smoking Status	11
Unique Device Identifier(s) for a Patient’s Implantable Device(s).....	11
Vital Signs.....	12

USCDI v1 Summary of Data Classes and Data Elements

Assessment and Plan of Treatment

Laboratory

- Tests
- Values/Results

Provenance

- Author
- Author Time Stamp
- Author Organization

Care Team Members

Medications

- Medications
- Medication Allergies

Smoking Status

Clinical Notes

- Consultation Note
- Discharge Summary Note
- History & Physical
- Imaging Narrative
- Laboratory Report Narrative
- Pathology Report Narrative
- Procedure Note
- Progress Note

Patient Demographics

- First Name
- Last Name
- Previous Name
- Middle Name (including middle initial)
- Suffix
- Birth Sex
- Date of Birth
- Race
- Ethnicity
- Preferred Language
- Address
- Phone Number

Unique Device Identifier(s) for a Patient's Implantable Device(s)

Goals

- Patient Goals

Vital Signs

- Diastolic blood pressure
- Systolic blood pressure
- Body height
- Body weight
- Heart rate
- Respiratory rate
- Body temperature
- Pulse oximetry
- Inhaled oxygen concentration
- BMI percentile per age and sex for youth 2-20
- Weights for age per length and sex
- Occipital-frontal circumference for children < 3 years old

Health Concerns

Problems

Immunizations

Procedures

DATA CLASS

Assessment and Plan of Treatment

Represents a health professional's conclusions and working assumptions that will guide treatment of the patient.

DATA ELEMENT	APPLICABLE STANDARD(S)
Assessment and Plan of Treatment	<ul style="list-style-type: none">• Logical Observation Identifiers Names and Codes (LOINC®) Database version 2.63• SNOMED International, Systematized Nomenclature of Medicine Clinical Terms (SNOMED CT®) U.S. Edition, March 2018 Release

DATA CLASS

Care Team Member(s)

The specific person(s) who participate or are expected to participate in the care team.

DATA ELEMENT	APPLICABLE STANDARD(S)
Care Team Member(s)	N/A

DATA CLASS

Clinical Notes

Composed of both structured (i.e. obtained via pick-list and/or check the box) and unstructured (free text) data. A clinical note may include the history, Review of Systems (ROS), physical data, assessment, diagnosis, plan of care and evaluation of plan, patient teaching and other relevant data points.

DATA ELEMENT	APPLICABLE STANDARD(S)
Consultation Note <i>Is generated as part of a request from a clinician for an opinion or advice from another clinician.</i>	<ul style="list-style-type: none">Logical Observation Identifiers Names and Codes (LOINC®) Database version 2.63
Discharge Summary Note <i>A synopsis of a patient's admission and course in a hospital or post-acute care setting.</i>	
History & Physical <i>Documents the current and past conditions of the patient.</i>	
Imaging Narrative <i>Contains a consulting specialist's interpretation of image data.</i>	
Laboratory Report Narrative <i>Contains a consulting specialist's interpretation of the laboratory report.</i>	
Pathology Report Narrative <i>Contains a consulting specialist's interpretation of the pathology report.</i>	
Procedure Note <i>Encompasses many types of non-operative procedures including interventional cardiology, gastrointestinal endoscopy, osteopathic manipulation, and many other specialty fields.</i>	
Progress Note <i>Represents a patient's interval status during a hospitalization, outpatient visit, treatment with a LTPAC provider, or other healthcare encounter.</i>	

DATA CLASS

Goals

An expressed desired health state to be achieved by a subject of care (or family/group) over a period of time or at a specific point of time.

DATA ELEMENT	APPLICABLE STANDARD(S)
Patient's Goals	<ul style="list-style-type: none">• Logical Observation Identifiers Names and Codes (LOINC®) Database version 2.63• SNOMED International, Systematized Nomenclature of Medicine Clinical Terms (SNOMED CT®) U.S. Edition, March 2018 Release

DATA CLASS

Health Concerns

Health related matter that is of interest, importance, or worry to someone who may be the patient, patient's family or patient's health care provider.

DATA ELEMENT	APPLICABLE STANDARD(S)
Health Concerns	<ul style="list-style-type: none">• Logical Observation Identifiers Names and Codes (LOINC®) Database version 2.63• SNOMED International, Systematized Nomenclature of Medicine Clinical Terms (SNOMED CT®) U.S. Edition, March 2018 Release

DATA CLASS

Immunizations

Record of an administration of a vaccination or a record of a vaccination as reported by a patient, a clinician, or another party.

DATA ELEMENT	APPLICABLE STANDARD(S)
Immunizations	<ul style="list-style-type: none">• CDC IIS: Current HL7 Standard Code Set, CVX -- Vaccines Administered, updates through October 27, 2017• CDC National Drug Code (NDC) Directory – Vaccine NDC Linker, updates through April 6, 2018

DATA CLASS

Laboratory

DATA ELEMENT	APPLICABLE STANDARD(S)
Tests <i>Examinations of specimens derived from humans for the purpose of providing information for the diagnosis, prevention, treatment of disease, or impairment of, or assessment of health.</i>	<ul style="list-style-type: none">• Logical Observation Identifiers Names and Codes (LOINC®) Database version 2.63• SNOMED International, Systematized Nomenclature of Medicine Clinical Terms (SNOMED CT®) U.S. Edition, March 2018 Release• The Unified Code of Units for Measure, Revision 1.9
Values/Results <i>Outcome of the examination of a tested specimen.</i>	<ul style="list-style-type: none">• Logical Observation Identifiers Names and Codes (LOINC®) Database version 2.63• SNOMED International, Systematized Nomenclature of Medicine Clinical Terms (SNOMED CT®) U.S. Edition, March 2018 Release,• The Unified Code of Units for Measure, Revision 1.9

DATA CLASS

Medication

DATA ELEMENT	APPLICABLE STANDARD(S)
Medications	<ul style="list-style-type: none"> RxNorm, June 4, 2018 Full Release Update The Unified Code of Units for Measure, Revision 1.9
Medications Allergies	<ul style="list-style-type: none"> RxNorm, June 4, 2018 Full Release Update The Unified Code of Units for Measure, Revision 1.9

DATA CLASS

Patient Demographics

DATA ELEMENT	APPLICABLE STANDARD(S)
First Name	
Last Name	
Previous Name	
Middle Name (including middle initial)	
Suffix	
Birth Sex	<p>Birth sex must be coded in accordance with HL7 Version 3 (V3) Standard, Value Sets for AdministrativeGender and NullFlavor (https://www.healthit.gov/sites/default/files/170299f_29_hl7_v3_agender_and_nullflavor.pdf) attributed as follows:</p> <ol style="list-style-type: none"> Male. M Female. F Unknown. nullFlavor UNK
Date of Birth	

DATA ELEMENT	APPLICABLE STANDARD(S)
Race	<ul style="list-style-type: none"> The Office of Management and Budget Standards for Maintaining, Collecting, and Presenting Federal Data on Race and Ethnicity, Statistical Policy Directive No. 15, as revised, October 30, 1997 (https://obamawhitehouse.archives.gov/omb/fedreg_1997standards) CDC Race and Ethnicity Code Set Version 1.0 (March 2000) (https://www.cdc.gov/phn/resources/vocabulary/index.html)
Ethnicity	<ul style="list-style-type: none"> The Office of Management and Budget Standards for Maintaining, Collecting, and Presenting Federal Data on Race and Ethnicity, Statistical Policy Directive No. 15, as revised, October 30, 1997 (https://obamawhitehouse.archives.gov/omb/fedreg_1997standards) CDC Race and Ethnicity Code Set Version 1.0 (March 2000) (https://www.cdc.gov/phn/resources/vocabulary/index.html)
Preferred Language	Request for Comment (RFC) 5646, "Tags for Identifying Languages", September 2009 (http://www.rfc-editor.org/info/rfc5646) See https://tools.ietf.org/html/bcp47
Address	
Phone Number	

DATA CLASS

Problems

Information about a condition, diagnosis, or other event, situation, issue, or clinical concept that is documented.

DATA ELEMENT	APPLICABLE STANDARD(S)
Problems	SNOMED International, Systematized Nomenclature of Medicine Clinical Terms (SNOMED CT®) U.S. Edition, March 2018 Release

DATA CLASS

Procedures

An activity that is performed with or on a patient as part of the provision of care.

DATA ELEMENT	APPLICABLE STANDARD(S)
Procedures	<p>The code set specified in 45 CFR 162.1002(a)(5):</p> <ul style="list-style-type: none">• Health Care Financing Administration Common Procedure Coding System (HCPCS), as maintained and distributed by HHS.• Current Procedural Terminology, Fourth Edition (CPT-4), as maintained and distributed by the American Medical Association, for physician services and other health care services.• SNOMED International, Systematized Nomenclature of Medicine Clinical Terms (SNOMED CT®) U.S. Edition, March 2018 Release• Optional:<ul style="list-style-type: none">○ International Classification of Diseases ICD-10-PCS 2018• Optional for technology primarily developed to record dental procedures:<ul style="list-style-type: none">○ The code set specified in 45 CFR 162.1002(a)(4) SNODENT, as maintained and distributed by the American Dental Association, for dental services.

DATA CLASS

Provenance

The metadata, or extra information about data, that can help answer questions such as when and who created the data.

DATA ELEMENT	APPLICABLE STANDARD(S)
Author	N/A
Author Time Stamp	N/A
Author Organization	N/A

DATA CLASS

Smoking Status

Classification of a patient's smoking behavior.

DATA ELEMENT	APPLICABLE STANDARD(S)
Smoking Status	SNOMED International, Systematized Nomenclature of Medicine Clinical Terms (SNOMED CT®) U.S. Edition, March 2018 Release

DATA CLASS

Unique Device Identifier(s) for a Patient's Implantable Device(s)

A unique numeric or alphanumeric code that consists of a device identifier (DI) and a production identifier (PI).

DATA ELEMENT	APPLICABLE STANDARD(S)
Unique Device Identifier(s) for a patient's implantable device(s)	UDI identifier as described by applicable FDA regulation. (found at https://www.fda.gov/MedicalDevices/DeviceRegulationandGuidance/UniqueDeviceIdentification/)

DATA CLASS

Vital Signs

Physiologic measurements of a patient that indicate the status of the body's life sustaining functions.

DATA ELEMENT	APPLICABLE STANDARD(S)
Diastolic blood pressure	<ul style="list-style-type: none">Logical Observation Identifiers Names and Codes (LOINC®) Database version 2.63The Unified Code of Units for Measure, Revision 1.9
Systolic blood pressure	
Body height	
Body weight	
Heart rate	
Respiratory rate	
Body temperature	
Pulse oximetry	
Inhaled oxygen concentration	
BMI percentile per age and sex for youth 2-20	
Weight for age per length and sex	
Occipital-frontal circumference for children < 3 years old	